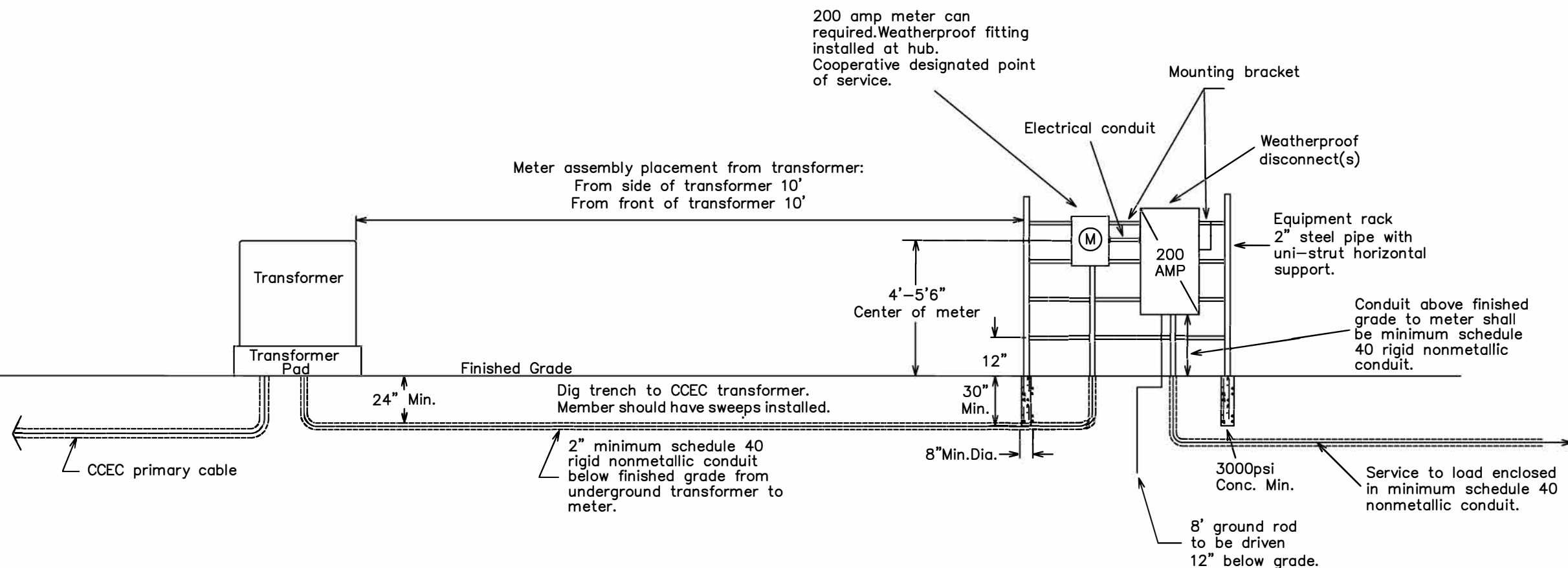


NOTES:

1. Weatherproof fittings required.
2. Wire sized to total disconnect size
3. Neutral can only be reduced one size on residential applications.
4. Notify Coleman County Electric Cooperative office when meter assembly is complete.
5. Member will provide conduit and wire from transformer into meter assembly.
6. Member will provide ditch and cover ditch from rack to pad mount.
7. Contact office for primary cable specs.



FOR THE MEMBER'S SAFETY,
WIRING INSTALLATIONS SHALL
CONFORM TO THE REQUIREMENTS
OF THE NEC AND NESC.



**200 AMP URD SERVICE ON
A RACK WITH CLASS 200
METER SOCKET**

| | | | |
|-------------------------|--------------------------|---------------------------|---------------------------|
| Drawn By: JH | Checked By: MG | Approved By: BM | Revised by: JH |
| Scale: N.T.S. | Date: 08-03-21 | Drawing #: | Date: 4/19/2023 |