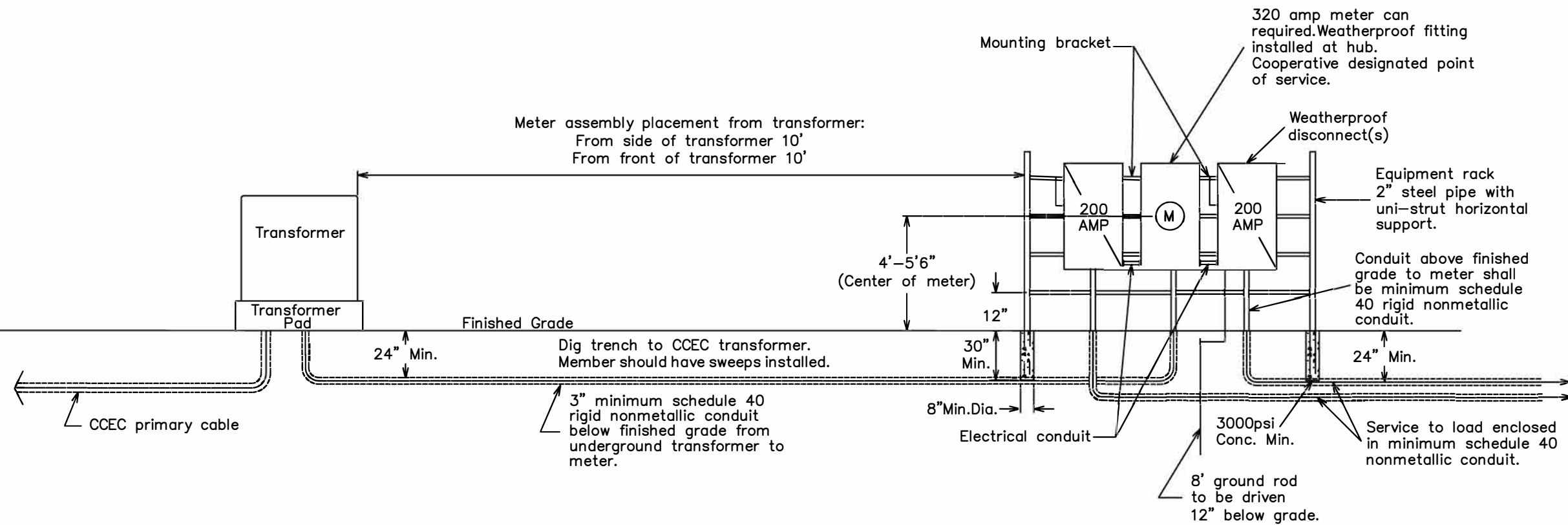


NOTES:

1. Main disconnect panel may not be used as an electrical race way.
2. Weatherproof fittings required.
3. Two (2) disconnects can be substituted with (1) fused disconnect.
4. Wire sized to total disconnect(s) size.
5. Neutral(s) may only be reduced one size on residential application. No reduction of the neutral(s) is allowed on commercial application.
6. Notify Coleman County Electric Cooperative office when meter assembly is complete.
7. Member will provide conduit and wire from transformer into meter assembly.
8. Member will provide ditch and cover ditch from rack to pad mount.
9. Contact office for primary cable specs.



FOR THE MEMBER'S SAFETY,
WIRING INSTALLATIONS SHALL
CONFORM TO THE REQUIREMENTS
OF THE NEC AND NESC.



320 AMP URD SERVICE ON A
RACK WITH CLASS 320 METER
SOCKET, 1 OR 2 DISCONNECTS

Drawn By: JH	Checked By: MG	Approved By: BM	Revised by: JH
Scale: N.T.S.	Date: 07-26-21	Drawing #:	Date: 4/19/2023